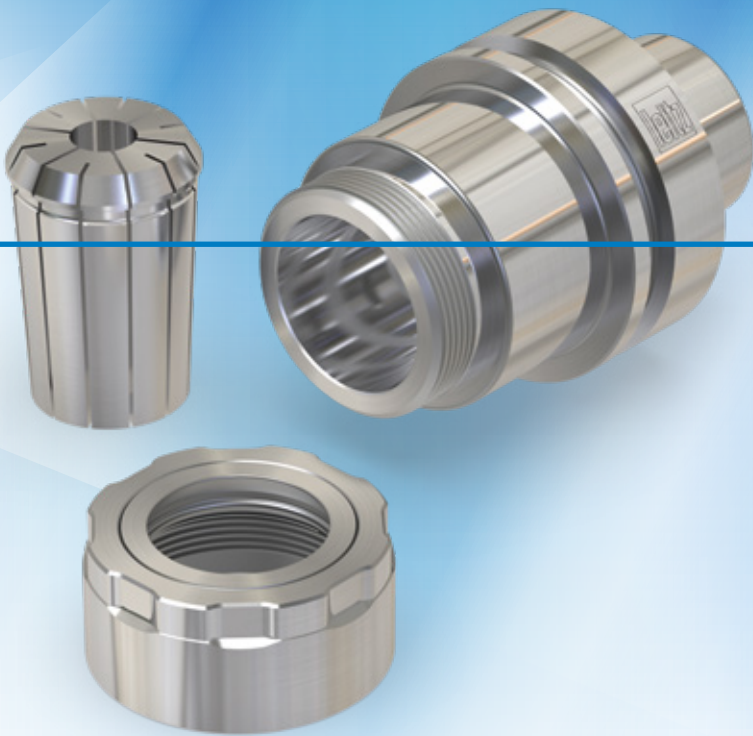




# NiRo Collet chuck Premium

Durable, precise and powerful



**Collet chucks are real work horses and often ensure good machining results in a wide range of applications over many years. This does not always leave the tool holders unaffected. Corrosion can occur, which has a negative impact on performance.**

With the daily challenges in mind, Leitz has developed an innovative collet system made of stainless steel (NiRo) that combines an extremely high degree of flexibility with enormous durability. With the NiRo Collet chuck Premium, complex machining tasks can be mastered quickly and without problems.

## YOUR BENEFITS

- Quick tool changes
- Reduced downtime
- Safe holding
- Long tool life
- Precise tool clamping

## AT A GLANCE

- Corrosion-resistant steel
- Ball bearing mounted collet nut with trapezoidal thread
- Special clamping device for easy and safe handling
- For shank diameter 3-25 mm
- Available from stock



-100 %

CORROSION DUE TO USE OF STAINLESS STEEL

2-fold

HIGHER HOLDING FORCES WITH COMPARABLE TIGHTENING TORQUE (80 NM)

-15 %

SLIMMER GEOMETRY COMPARED TO COMMERCIAL COLLET CHUCKS

## Your benefits due to ...



### EFFICIENCY & PRODUCTIVITY

**Precise and safe clamping of tools with the highest performance requirements**

- Shorter downtimes due to fast, uncomplicated tool changes
- Higher system availability due to shortened downtimes
- Longer tool life due to high runout accuracy



### QUALITY

**Process reliability over many years**

- Highly accurate and functionally reliable tool clamping
- Long tool life due to the use of corrosion-resistant steel
- Maximum holding forces and high concentricity with OZ collets



### FLEXIBILITY

**For different applications**

- For safe clamping of different shank tools
- Use even in confined conditions due to very slim design

NiRo Collet chuck  
Premium:  
durable, precise  
and powerful!

